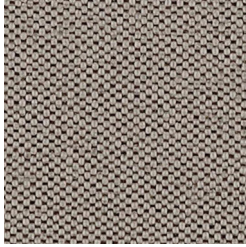
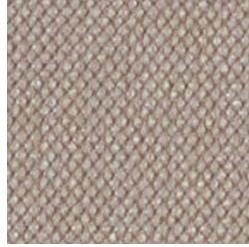


INTERIOR



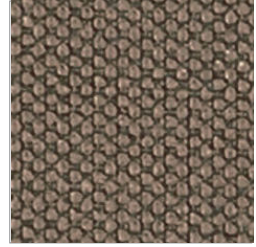
SPARO 25



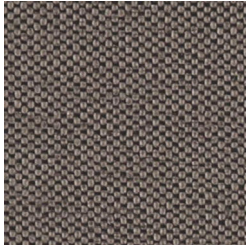
DIVINA 07



SPARO 42



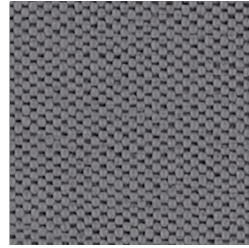
DIVINA 11



SPARO 43



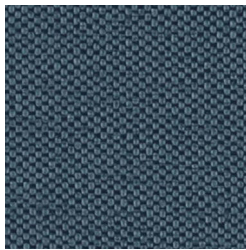
DIVINA 04



SPARO 45



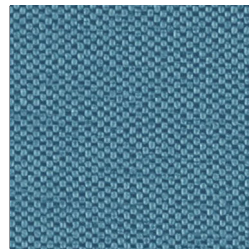
DIVINA 37



SPARO 51



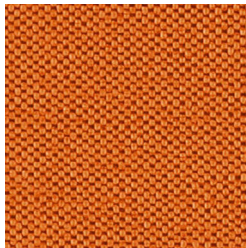
DIVINA 49



SPARO 50



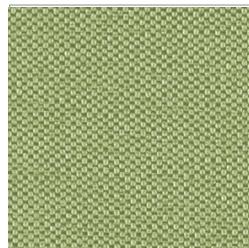
DIVINA 46



SPARO 59



DIVINA 27



SPARO 37



DIVINA 44

INTERIOR

KATEGORIE **C**

SLOŽENÍ: 100% polyester, HMOTNOST:

DIVINA 372 g/m², **SPARO** 357 g/m²,

ŠÍŘE: **DIVINA** 140 cm, **SPARO** 145 cm,

ODOLNOST PROTI ODĚRU:

40 000 Martindale, ODOLNOST PROTI

OHNI: BS 5852 source 0

COMPOSITION: 100% polyester,

WEIGHT: **DIVINA** 372 g/m², **SPARO**

357 g/m², WIDTH: **DIVINA** 140 cm,

SPARO 145 cm, ABRASION RESISTANCE:

40 000 Martindale, FLAMMABILITY:

BS 5852 source 0

ZUSAMMENSETZUNG: 100% polyestere,

GEWICHT: **DIVINA** 372 g/m², **SPARO** 357

g/m², BREITE: **DIVINA** 140 cm, **SPARO** 145

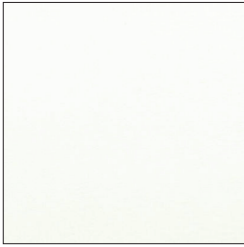
cm, SCHEUERFESTIGKEIT: 40 000

Martindale, FEUERSICHERUNG:

BS 5852 source 0



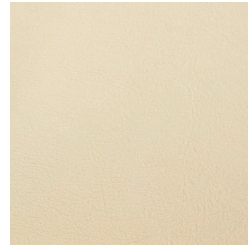
TUNDRA



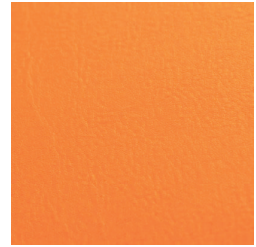
1198



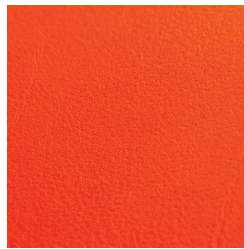
1636



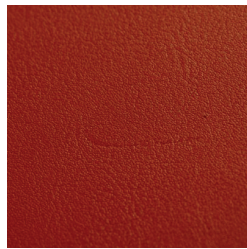
1210



1542



1556



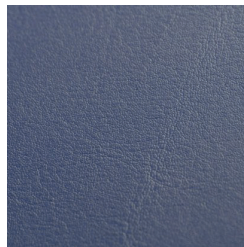
1557



1454



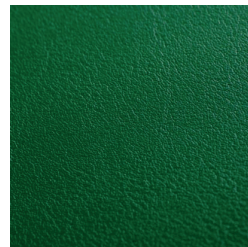
1608



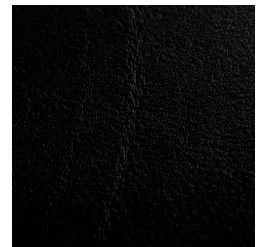
1581



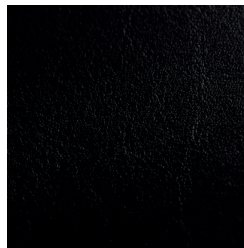
1453



1455



1197



1195

TUNDRA

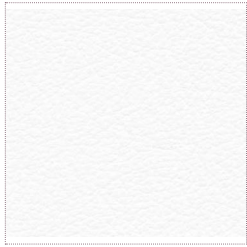
KATEGORIE C

SLOŽENÍ: 90% PVC, 10% PES,
HMOTNOST: 950 g/m² ± 5, ŠÍŘE:
137 cm ± 2, ODOLNOST PROTI ODĚRU:
51 000 Martindale, ODOLNOST PROTI
ŽMOLKOVÁNÍ: skupina 4/5,
STÁLOBAREVNOST: skupina 5,
ODOLNOST PROTI OHNI: EN 1021/1-2
Materiál je vhodné čistit vlhkým hadříkem.
Je možné použít šetrné čisticí prostředky
speciálně určené pro čištění PVC.

COMPOSITION: 90% PVC, 10% PES,
WEIGHT: 950 g/m² ± 5, WIDTH:
137cm ± 2, ABRASION RESISTANCE:
51 000 Martindale, PILLING: group 4/5,
LIGHT FASTNESS: group 5,
FLAMMABILITY: EN 1021/1-2,
Clean with damp cloth. Special cleaners
designed directly for PVC can be used.

ZUSAMMENSETZUNG: 90% PVC, 10% PES,
GEWICHT: 950 g/m² ± 5, BREITE:
137 cm ± 2, SCHEUERFESTIGKEIT: 51 000
Martindale, PILLING: Gruppe 4/5,
LICHTTECHTHEIT: Gruppe 5,
FEUERSICHERUNG: EN 1021/1-2,
Es ist passend das material mit dem
feuchten läppchen zu reinigen. Es ist
melich freundliche, speziell zur reinigung
von PVC entwickelte, reinigungs mittel zu
verwenden.

OHIO



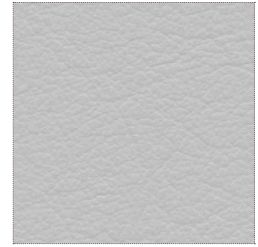
1000



1042



1024



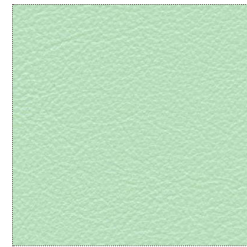
1031



1027



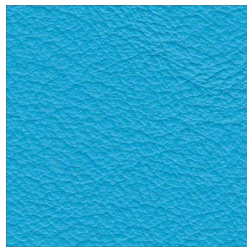
1038



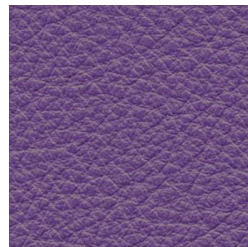
1010



1011



1037



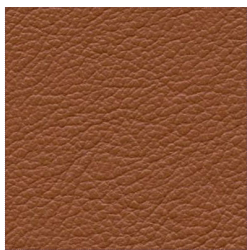
1035



1009



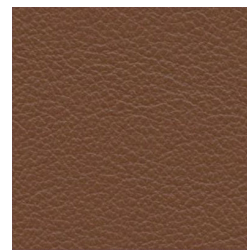
1008



1005



1028



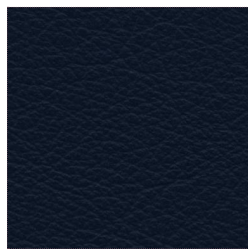
1018



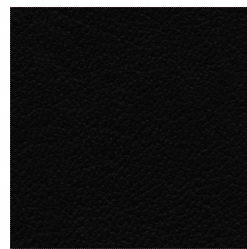
1019



1040



1014



1022

OHIO

KATEGORIE D

SLOŽENÍ: hovězina,
PRŮMĚRNÁ VELIKOST: 4,5 g/m²,
TLOUŠŤKA: 0,9-1,00 mm,
STÁLOBAREVNOST: skupina 4,
ODOLNOST PROTI OHNI: EN 1021-1:2006
U přírodní kůže je možný malý rozdíl
v barvě a struktuře. Struktura, malé
porušení a záhyby jsou typické a dělají
kůži originální. Proto tyto odlišnosti nejsou
důvodem k reklamaci.

COMPOSITION: cowhide,
AVERAGE SIZE: 4,5 g/m²,
THICKNESS: 0,9-1,00 mm,
LIGHT FASTNESS: group 4,
FLAMMABILITY: EN 1021-1:2006
Natural leather may vary in colour and
structure. The structure, little imperfec-
tions and wrinkles make leather original
and are not a reason to make a com-
plaint.

ZUSAMMENSETZUNG: rindsleder,
DURCHSCHNITTLICHE GRÖßE: 4,5 g/m²,
STÄRKE: 0,9-1,00 mm,
LICHTECHTHEIT: Gruppe 4,
FEUERSICHERUNG: EN 1021-1:2006
Beim naturleder ist eine kleine differenz
im farbton sowie in der struktur möglich.
Die struktur, kleine unregelmässigkeiten
und falten sind typisch und machen das
leder originell. Deswegen begründen
diese abweichungen keine reklamation.